

Helping you,  
get well soon!



**B-CAT2™**  
I.V. Cannula w/Inj Port

Thin Wall F.E.P

### Catheter With Round Tip

High flow rate with minimum discomfort to patient

Biocompatible material



Back Cut

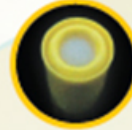
### Triple Facet Bevel Needle

Minimum insertion distance, Minimum Insertion Trauma Patient Safety

Highly Transparent

### Flash Back Chamber

Easy Identification of blood flash back



Latex Free

### Heparin Lock

80 injection without leakage

Meets International Quality Standard  
According to TUV Nord GmbH, Langemarckstr 20,  
D45141 Essen Din Em ISO 9001:2000

### Flexible Wings

Secure Fixation



## High Flow Rate Specification

Size	Color	O.D mm	I.D mm	Cannula Length mm	Flow rate ml/min
14 G	Orange	2.1	1.7	45	325
16 G	Grey	1.7	1.3	45	200
18 G	Green	1.4	1.0	45	100
20 G	Pink	1.1	0.7	32	58
22 G	Blue	1.0	0.6	25	32
24 G	Yellow	0.8	0.5	19	20

Manufactured by:



Marketed by:

